

Correcting a Persistent Manhattan Project Statistical Error

**Cameron Reed
Alma College**

APS April Meeting, Anaheim, 2011

Maj. Gen. Kenneth Nichols

The Road To Trinity (p. 146)
(Morrow, NY, 1987)

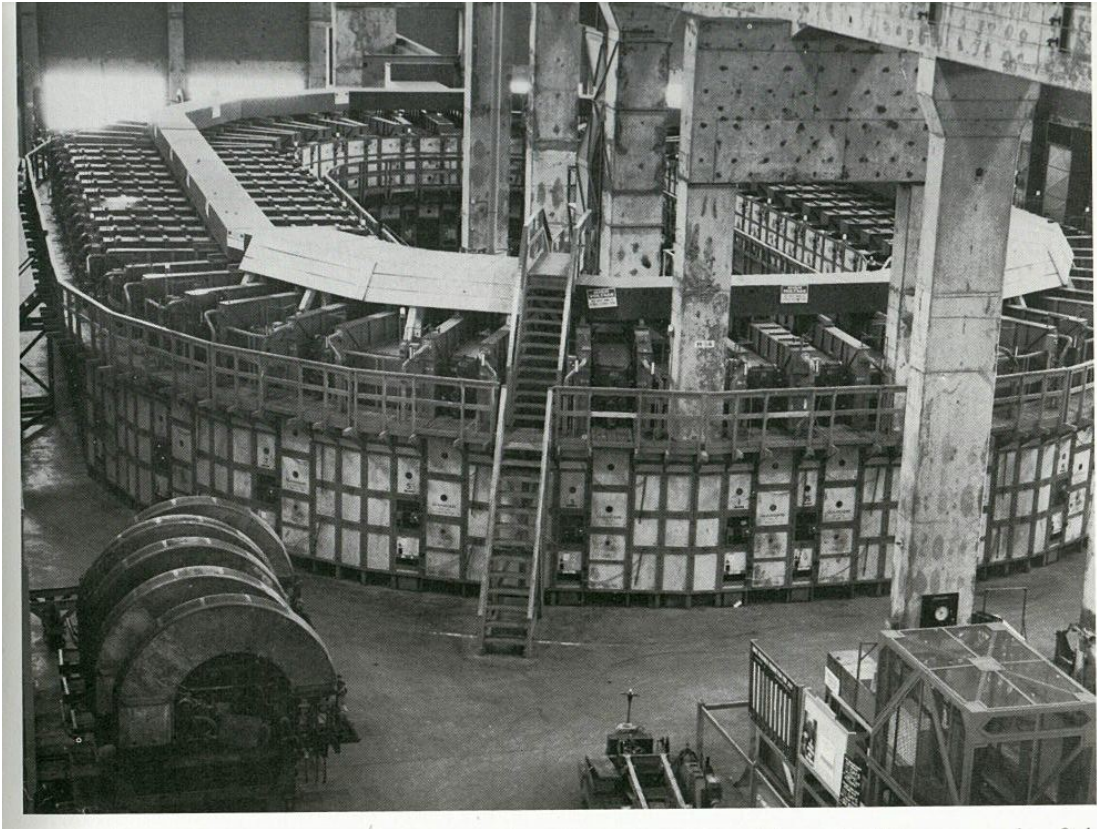
“When the plant was finally completed, we were using at Oak Ridge almost one-seventh of the electric power being generated in the United States.”

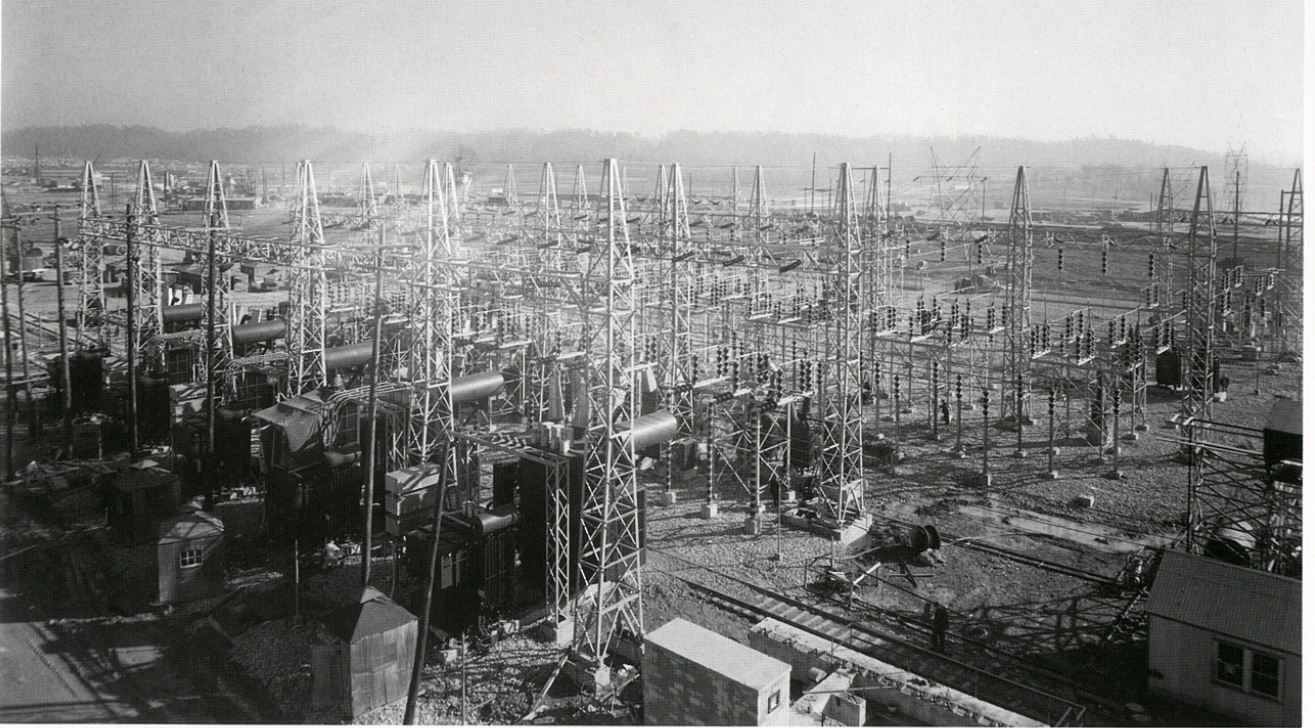


F. G. Gosling

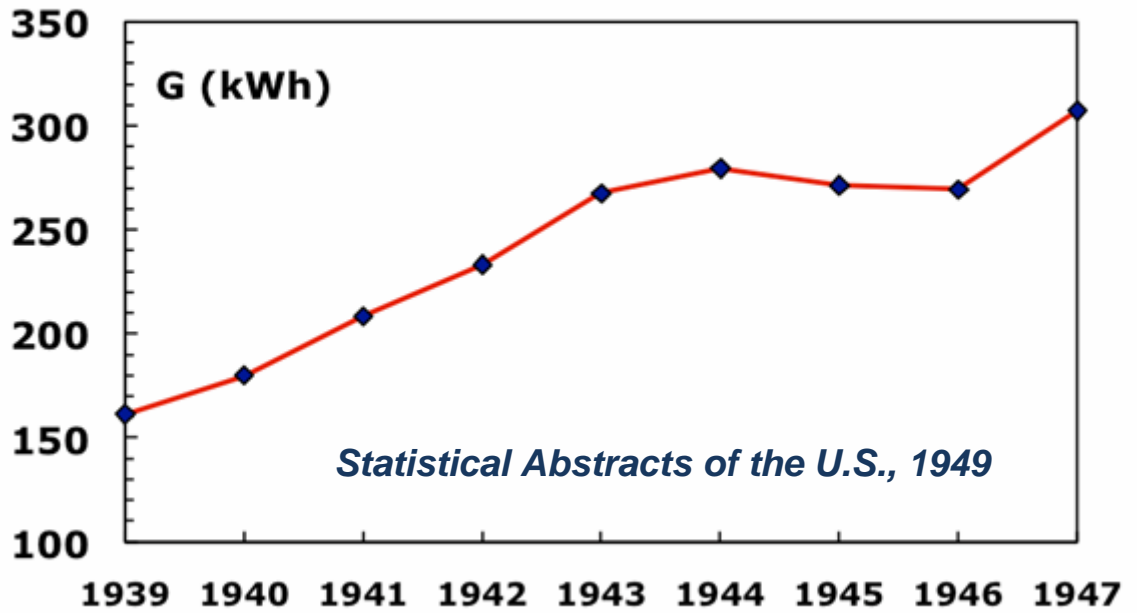
The Manhattan Project: Making the Atomic Bomb (DoE 2005, p. 20)

CONSUMPTION). AT THE END OF THE WAR, OAK RIDGE WAS the fifth largest town in Tennessee, and the Clinton Engineer Works was consuming one-seventh of all the power being produced in the nation.²⁹ While the Army and its contractors tried to keep up with the

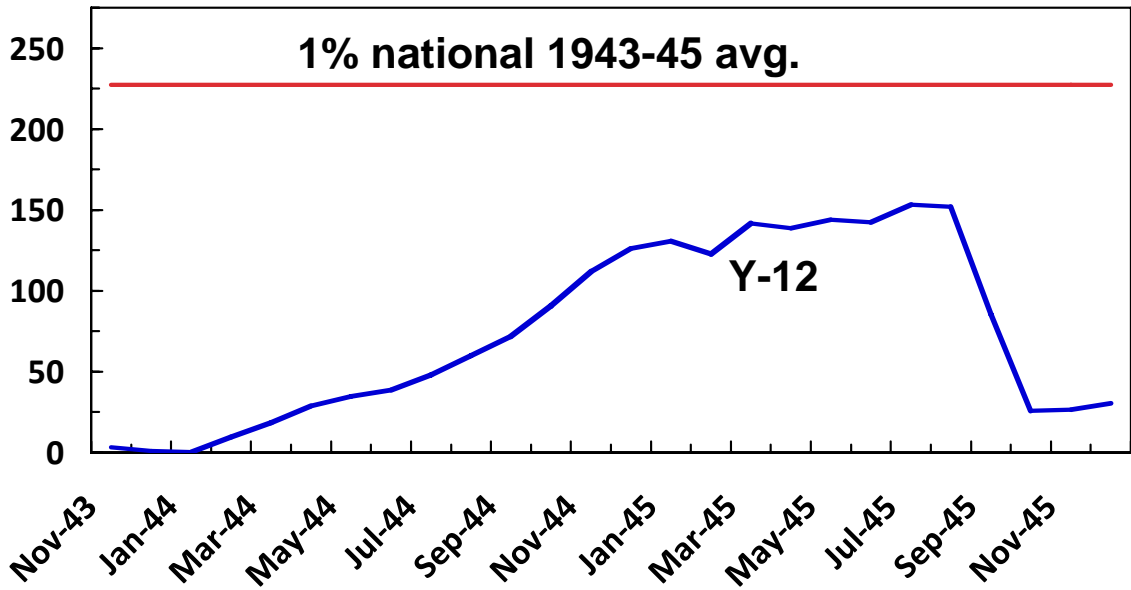




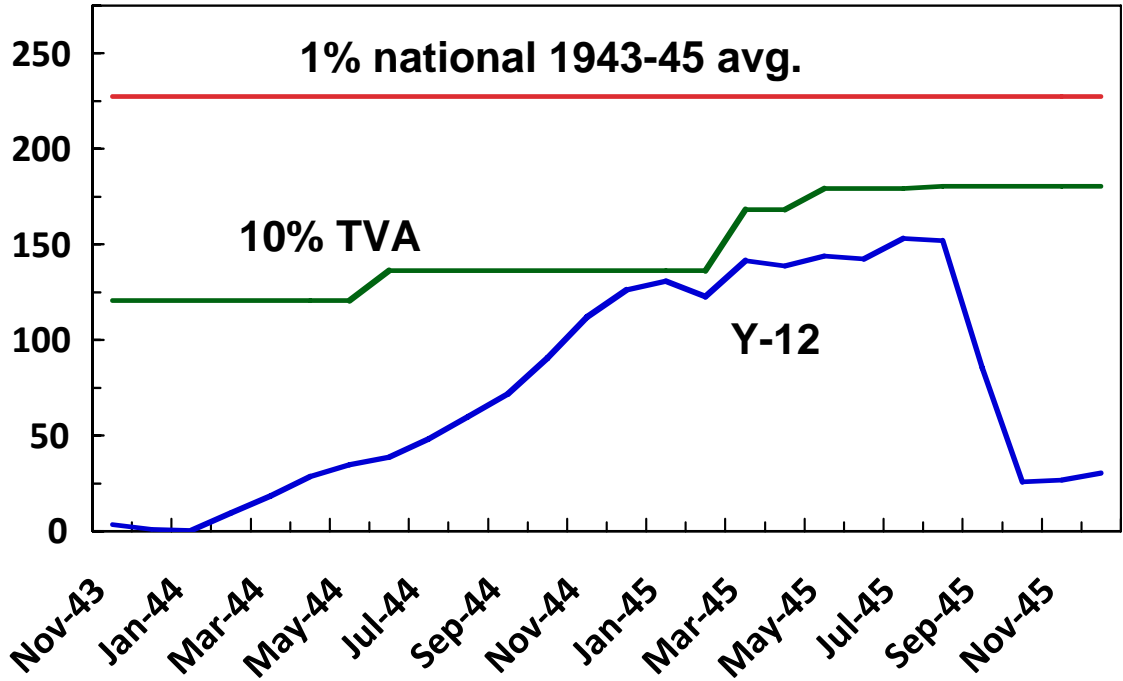
National Electricity Production



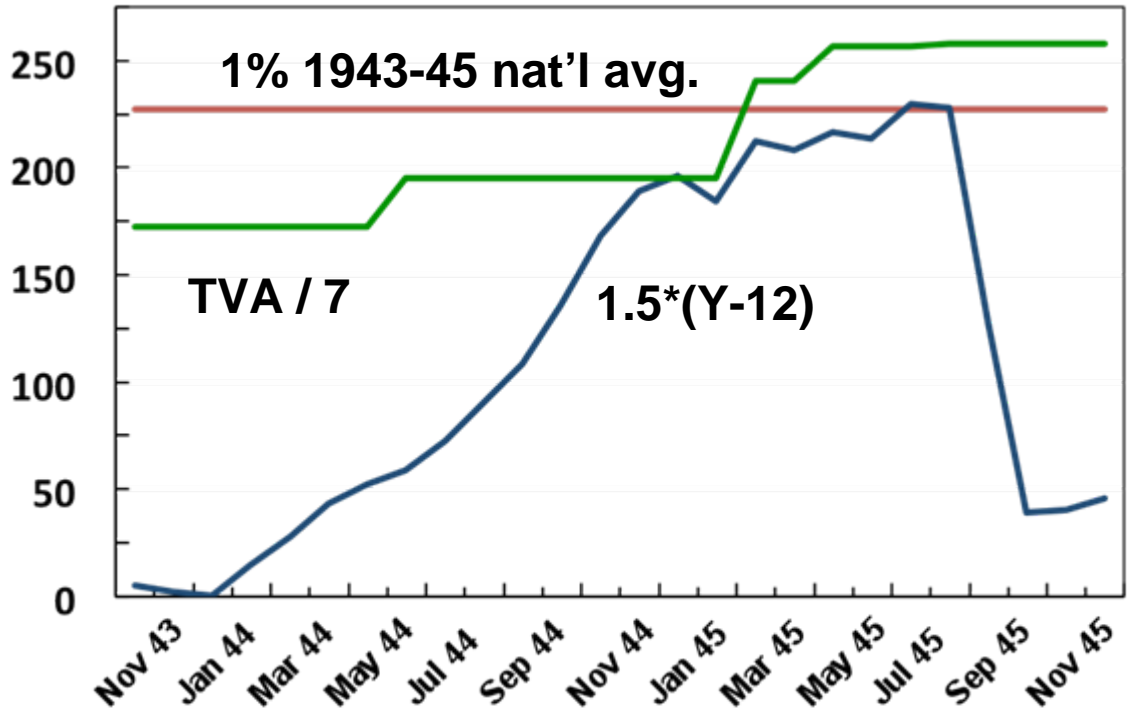
Monthly generation/consumption M(kWh)



Monthly generation/consumption M(kWh)



M(kWh)



Acknowledgements

D. Ray Smith, Y-12 Historian, Oak Ridge

Patricia B. Ezzell

Tribal Liason & Corporate Historian, TVA